

# INVEST IN THE REBE

# CCA



\*Artist's concept

CONDOMINIUM  
RESIDENCES  
IN THE HEART  
OF HAMILTON

JOHN REBECCA PARK

# HAMILTON

## BY THE NUMBERS

1

HAMILTON RESALE CONDO PRICES GREW BY **\$36,000**. THAT'S **9%** GROWTH.

From January 2022 to November 2022: <https://hamilton.listing.ca/real-estate-price-history.htm>

2

HAMILTON RANKS **6TH** AMONG THE LARGEST NORTH AMERICAN CITIES WITH THE MOST DRAMATIC HOME PRICE JUMPS.

<https://www.point2homes.com/news/canada-real-estate/18-north-american-cities-home-price-staggering-jumps.html>

3

HAMILTON'S AVERAGE PRICE GROWTH HAS BEEN **104%** OVER THE **LAST 10 YEARS**.

<https://hamilton.listing.ca/condo-price-history.htm>

4

HAMILTON'S AVERAGE CONDO PRICE IN 2020 WAS **37%** **LESS** THAN THE AVERAGE CONDO PRICE IN TORONTO.

<https://wowa.ca/hamilton-housing-market>

5

HAMILTON'S AVERAGE RENT IS **28%** **LESS** THAN TORONTO'S RENTAL RATE.

1 bedroom: [https://www.numbeo.com/cost-of-living/compare\\_cities.jsp?country1=Canada&city1=Hamilton&country2=Canada&city2=Toronto](https://www.numbeo.com/cost-of-living/compare_cities.jsp?country1=Canada&city1=Hamilton&country2=Canada&city2=Toronto)

# DID YOU KNOW?

THE AVERAGE COST PER SQ.FT.  
FOR A CONDO IN THE CITY CENTRE IS

**55%**   
  
  
**LOWER**  
**IN HAMILTON**  
**THAN TORONTO.**

[https://www.numbeo.com/cost-of-living/compare\\_cities.jsp?country1=Canada&city1=Toronto&country2=Canada&city2=Hamilton](https://www.numbeo.com/cost-of-living/compare_cities.jsp?country1=Canada&city1=Toronto&country2=Canada&city2=Hamilton)

REBECCA CONDOS

ROSEHAVEN HOMES

REBECCA CONDOS

ROSEHAVEN HOMES

REBECCA CONDOS

ROSEHAVEN HOMES

REBECCA CONDOS



REBECCA CONDOS

ROSEHAVEN HOMES

REBECCA CONDOS

ROSEHAVEN HOMES

REBECCA CONDOS

ROSEHAVEN HOMES

R



**9TH LARGEST REGIONAL  
ECONOMY IN CANADA.**



**THE MOST DIVERSIFIED  
MUNICIPALITY AND ONTARIO'S  
FASTEST GROWING ECONOMY.**



**RANKED 4TH IN CONNECTIVITY  
AND 10TH IN FDI STRATEGY.**

Hamilton Health Sciences ranks **#2 among 40 Canadian research hospitals** and is a top 25 influential research community globally, renowned for leading in stem cell research.

The only city that can offer **all four modes of transportation** – rail, road, air and port.

Hamilton's millennial population is 28% and has significant impact on Hamilton's **diversified economy.**

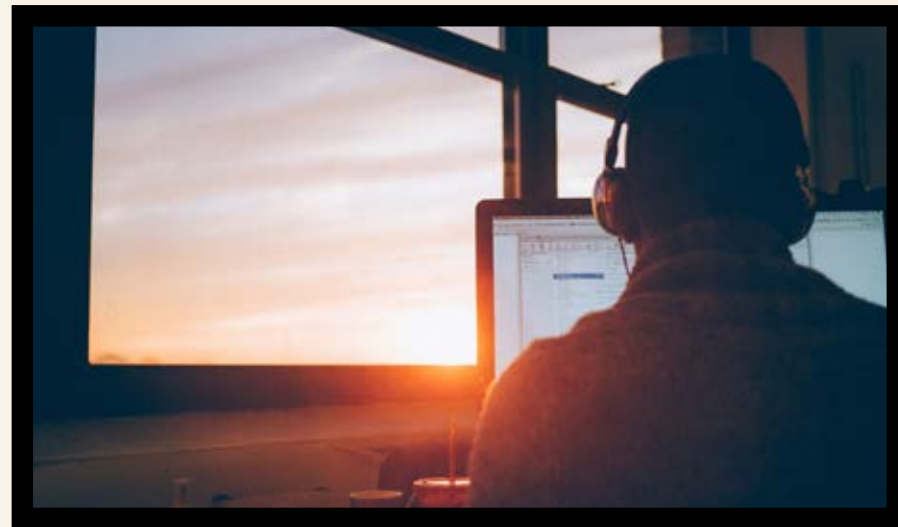
Mohawk College is the **largest trainer of apprentices** in the province of Ontario.

**Top institutions** are a magnet for national and international talent

McMaster University ranks as one of Canada's **top 3** most research-intensive universities.

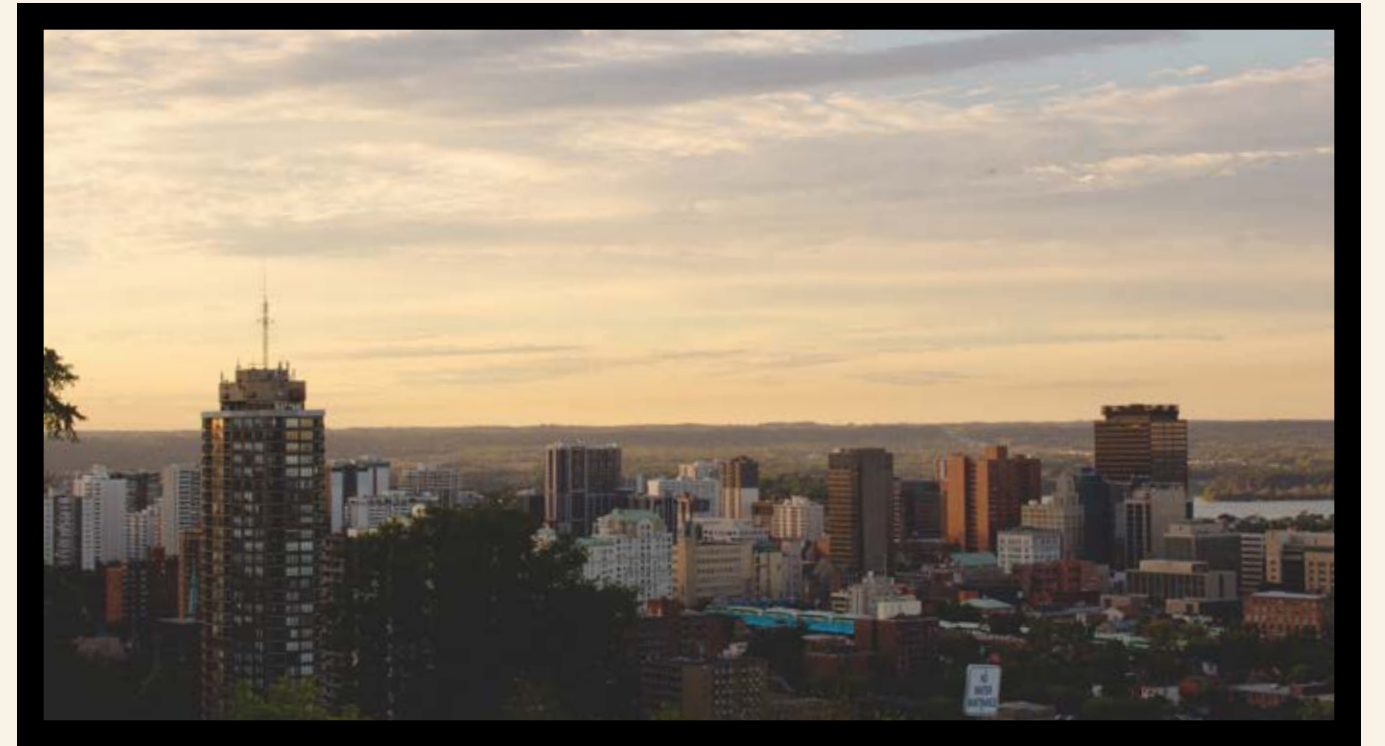
One of the three largest **food and beverage processing** areas in North America.

# REASONS TO INVEST IN A HAMILTON CONDO



## HOME TO BOOMING INDUSTRIES

Hamilton is becoming known as a tech and education/ research centre in the province of Ontario and is recognized as an up-and-coming centre to raise a family. With the ease transportation around the city and on the GO, more people are moving to Hamilton.



## A FRIENDLIER HOME-BUYING BUDGET

The average cost per square foot for a condo in the city centre is 55% lower in Hamilton than Toronto. This positions Hamilton as great option to consider for first-time and seasoned homebuyers to live well and affordably, close to schools, parks, rec centres and other amenities.

[https://www.numbeo.com/cost-of-living/compare\\_cities.jsp?country1=Canada&city1=Toronto&country2=Canada&city2=Hamilton](https://www.numbeo.com/cost-of-living/compare_cities.jsp?country1=Canada&city1=Toronto&country2=Canada&city2=Hamilton)



## HOT NEW NEIGHBOURHOODS

Hamilton's redeveloped areas are especially attracting attention from new home buyers looking for a Toronto Queen West vibe, serving the needs of young couples and those working in new information and creative industries. One such location is Crown Point East which boasts a number of fashionable eateries, wine-bars and patios.

# STATISTICS



**579,200\***

**TOTAL POPULATION**

United Nations, 2017: <https://datacommons.org/place/wikidata/Q133116>

**780,000\***

**PROJECTED POPULATION GROWTH BY 2041**

<https://www.hamilton.ca/city-planning/planning-community/elfrida-growth-area-study>

## NEAREST GO STATIONS

## TOP 5 HAMILTON EMPLOYERS

R

Arcelormittal Dofasco G.P.

City of Hamilton

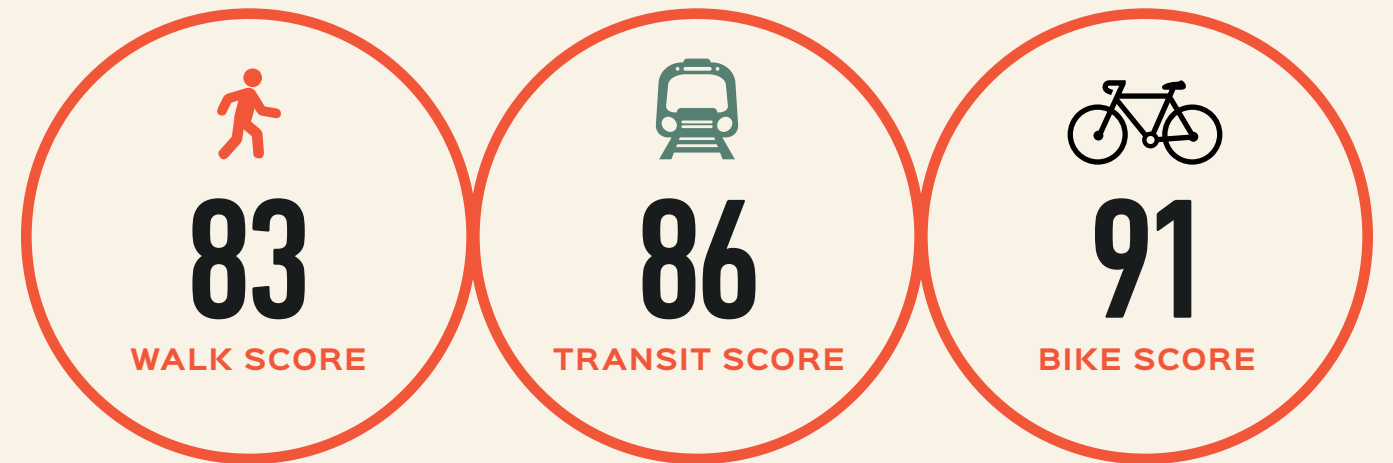
McMaster University

Mohawk College

St. Joseph's Healthcare Hamilton

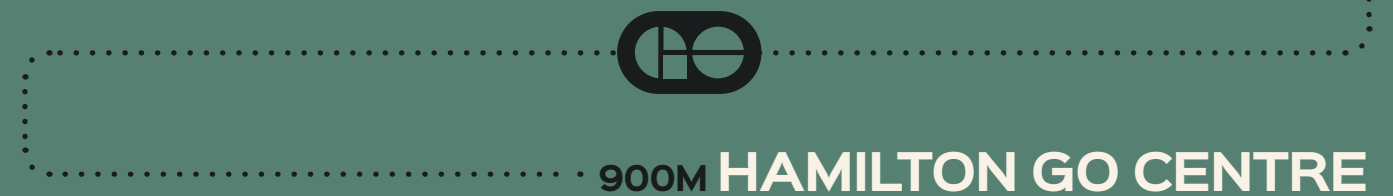
<https://www.canadastop100.com/niagara/>

EMPLOYERS\*



<https://www.walkscore.com/score/71-rebecca-st-hamilton-on-canada>

WEST HARBOUR GO STATION 1.2KM





# EDUCATION

**COLLÈGE BORÉAL** is the only French-language college in Southwestern Ontario. It offers continuing education, immigrant integration services and related services to businesses and communities.

**MOHAWK COLLEGE** educates more than 17,000 full-time and apprenticeship students at three campuses in Hamilton, Ontario, and is recognized as a leader in health and technology education.

**MCMASTER UNIVERSITY** is a global leader in education with a focus on community engagement. Its 7,500 faculty and staff members integrates the work of the University with the needs of the city.

**REDEEMER UNIVERSITY COLLEGE** offers degrees in Arts, Science and Education. It gives students a chance to explore the relationship between faith and learning through a Christian perspective.





## CAR SHARE PROGRAMS

Flexible and convenient Community Car Share. Dedicated parking spots at The Rebecca Condos for added convenience.



## HAMILTON STREET RAILWAY

Hamilton's public bus transit system

Fleet of 260 buses

3,000 stops, shelters & terminals

Serving over 21,000,000 customers

[https://en.wikipedia.org/wiki/Hamilton\\_Street\\_Railway](https://en.wikipedia.org/wiki/Hamilton_Street_Railway)



## HIGHWAY ACCESS

Close proximity to Highway 403, QEW, Lincoln Alexander Pkwy and Red Hill Valley Pkwy.



## HAMILTON INTERNATIONAL AIRPORT

Low-cost gateway for passenger travel

Canada's largest express cargo airport and hub



## THE PORT OF HAMILTON

The largest port in Ontario by tonnage. Annually, it handles 10 million tonnes of mixed cargo and receives 640 vessels, more than all other Ontario ports combined.

The cargo transmitting the Port is connected to \$6 billion in economic activity and 38,000 jobs in Ontario

<https://www.hopaorts.ca/locations/port-of-hamilton/>

## EXISTING AND FUTURE EXPANSION IN HAMILTON



OVER 65 MILLION PASSENGERS PER YEAR



# DINING

Known for its cobblestone roads and vibrant patios during the warm summer months, Hamilton's Restaurant row does not fall short of options for your daytime or evening dining plans. Located along King William St. and James St. N., you'll be just steps away from what is sure to become your favourite destination for a coffee and chat, a cocktail and a snack, or a palette pleasing meal.

<https://eatnorth.com/helen-earley/hamiltons-restaurant-row>

**JAMES ST. N.**

**EARTH TO TABLE BREAD BAR**  
14 JAMES ST. N.

**UNION CHICKEN**  
10 JAMES ST. N.



**KING WILLIAM ST.**



**HUGHSON ST. N.**



**JOHN ST. N.**

**CATHARINE ST. N.**

**REBECCA ST.**

THE **REBECCA**  
SITE CONDOS



**ELECTRIC DINER**  
28 JAMES ST. N.

**MEZZA CAFÉ**  
28 JAMES ST. N.

**RELAY COFFEE ROASTERS**  
27 KING WILLIAM ST.

**BERKLEY NORTH**  
31 KING WILLIAM ST.

**UNDEFINED**  
35 KING WILLIAM ST.

**THE FRENCH**  
37 KING WILLIAM ST.

**THE MULE**  
41 KING WILLIAM ST.

**THE DIPLOMAT**  
43 KING WILLIAM ST.

**HAMBRGR**  
49 KING WILLIAM ST.

**MYSTIC RAMEN**  
51 KING WILLIAM ST.

\*Map not to scale

# & RECREATION

# CULTURE

Experience the best in culture and recreation that Hamilton has to offer just a few blocks from The Rebecca, with events and activities happening all year round!



ART GALLERY OF HAMILTON



BAYFRONT PARK

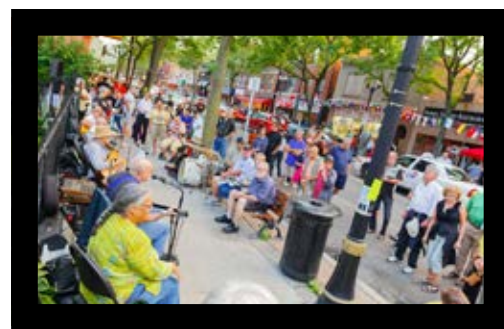


PIER 8 OUTDOOR RINK

HAMILTON PUBLIC LIBRARY



LANDMARK CINEMAS



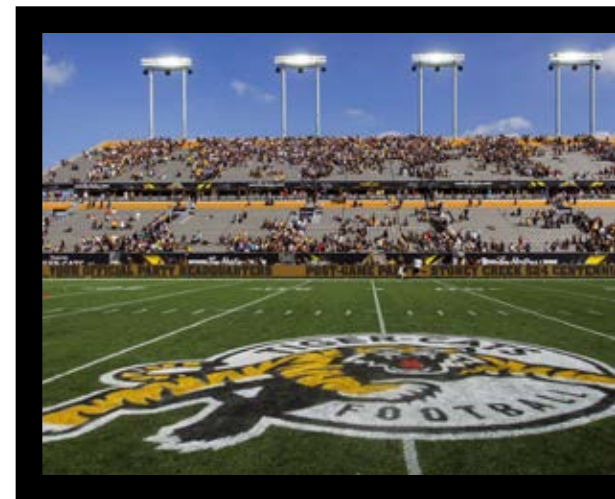
HAMILTON'S ART CRAWL



FIRST ONTARIO CENTRE



HAMILTON FARMER'S MARKET



TIM HORTONS FIELD

# NATURE NATURE NATURE NA



Over 49km of  
city-owned **trails**

<https://www.hamilton.ca/parks-recreation/parks-trails-and-beaches/parks-listing>



Up to 265km of **on-street cycling lanes** and major multi-use trails

<https://www.hamilton.ca/streets-transportation/biking-cyclists/cycling-infrastructure>



Over 100 waterfalls – known as the **Waterfall Capital of Canada**

<https://investinhamilton.ca/discover-hamilton/life-in-hamilton/>



**Largest botanical garden in Canada** – Royal Botanical Gardens

<https://www.rbg.ca/>



# Our Passion, Your Home

Since 1992, Rosehaven's portfolio has grown to include *over 9,000 homes and condos* across southern Ontario and the GTA. The combination of exquisite exterior and interior design, superior construction, and unparalleled customer service is what differentiates us as a builder.

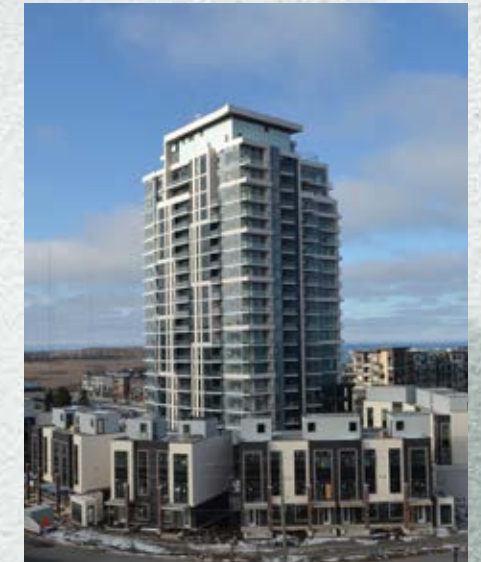


The Vincent  
**VAUGHAN**  
Under Construction



KiWi Condos  
**HAMILTON**  
Recently Completed

We have now established a new tradition of excellence in mid- and high-rise construction, including right here in Hamilton. Along with The Rebecca, Rosehaven is also behind KiWi Condos on King William, a modernist addition to the city's art scene. Our other condo projects include Odyssey Condos and Towns, an award-winning lakeside condominium in Grimsby; The Vincent, a hotel-style residence at the Vaughan Metropolitan Centre; and Affinity Condos, an inspired mid-rise in Burlington. The centrepiece of Rosehaven's condo portfolio, however, is The Randall, an exclusive collection of luxury suites in Oakville.



Odyssey  
**GRIMSBY**  
Recently Completed



Affinity Condominiums  
**BURLINGTON**  
Completed

The Randall Residences  
**OAKVILLE**  
Completed

